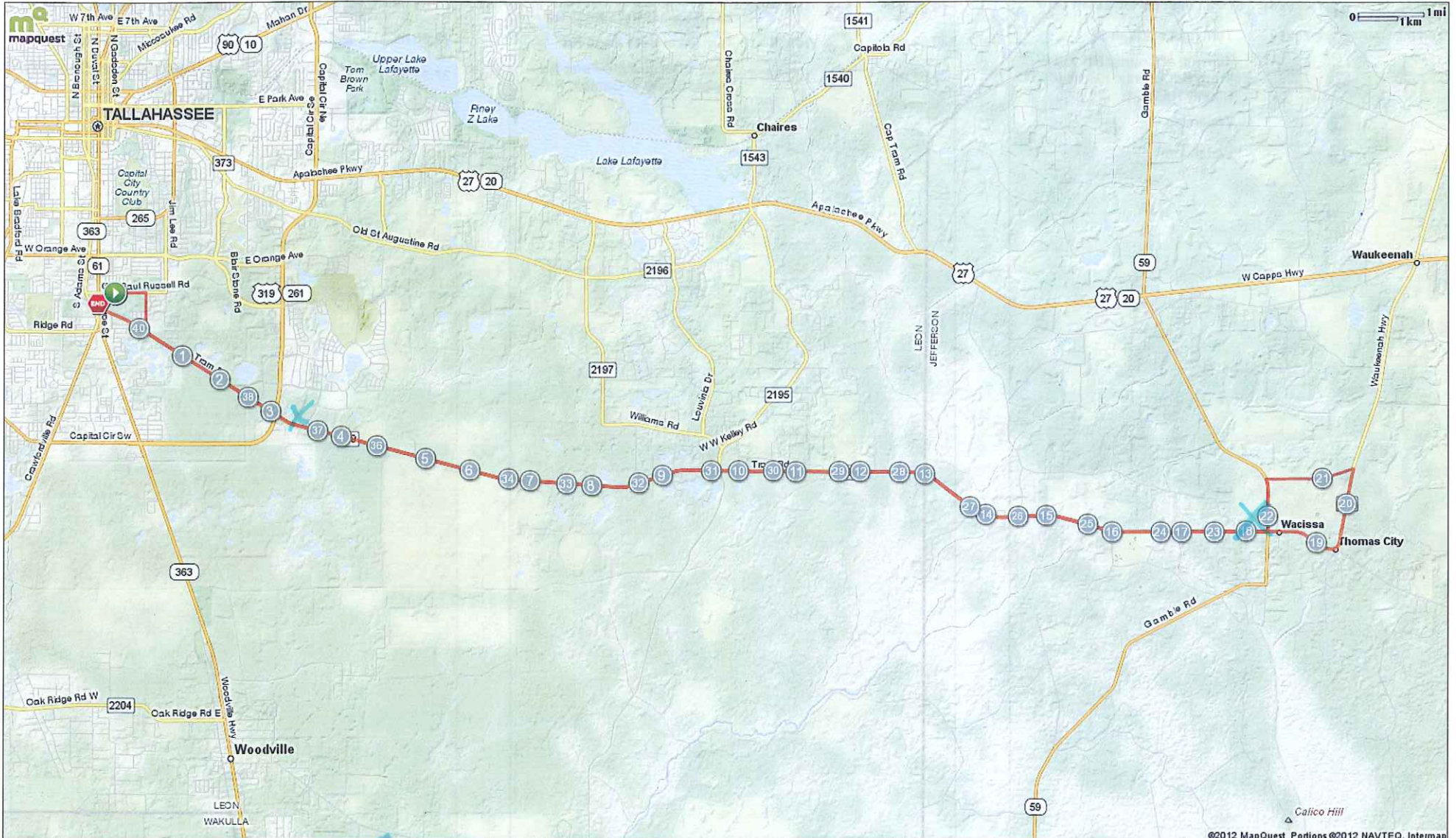


The Ride for Hope - 40 Mile Course

Starts In Monticello, Florida

40.62 miles

Elevation **223ft** Max **39ft** Min **+456ft** Ascent **-489ft** Descent **< 3 %** Max Climb



Description
Great bike ride for Tri- athletes!

X = Water/Sag Stop

The Ride for Hope - 40 Mile Course

Starts in Monticello, Florida

Notes		
AT	FOR	NOTES
START	2299ft	Head east toward Zillah St
0.44 mi.	2821ft	Turn right at Zillah St
0.97 mi.	18mi 2632ft	Turn left at County Rd 259 E/ Tram Rd Continue to follow County Rd 259 E
		Waterstop
		Waterstop

Notes		
AT	FOR	NOTES
19.47 mi.	1mi 298ft	Head northeast on County Rd 259 N toward Beth Page Rd
20.52 mi.	1493ft	Turn left at Beth Page Rd
20.81 mi.	1mi 187ft	Head west on Beth Page Rd toward FL-59 S/ Gamble Rd

Notes		
AT	FOR	NOTES
21.84 mi.	3771ft	Turn left at FL-59 S/ Gamble Rd
22.56 mi.	14mi 4834ft	Turn right at County Rd 259 W
37.47 mi.	3mi 1116ft	Slight right at County Rd 259 W/ Tram Rd
40.68 mi.		Turn right at S Monroe St

got a water stop = X